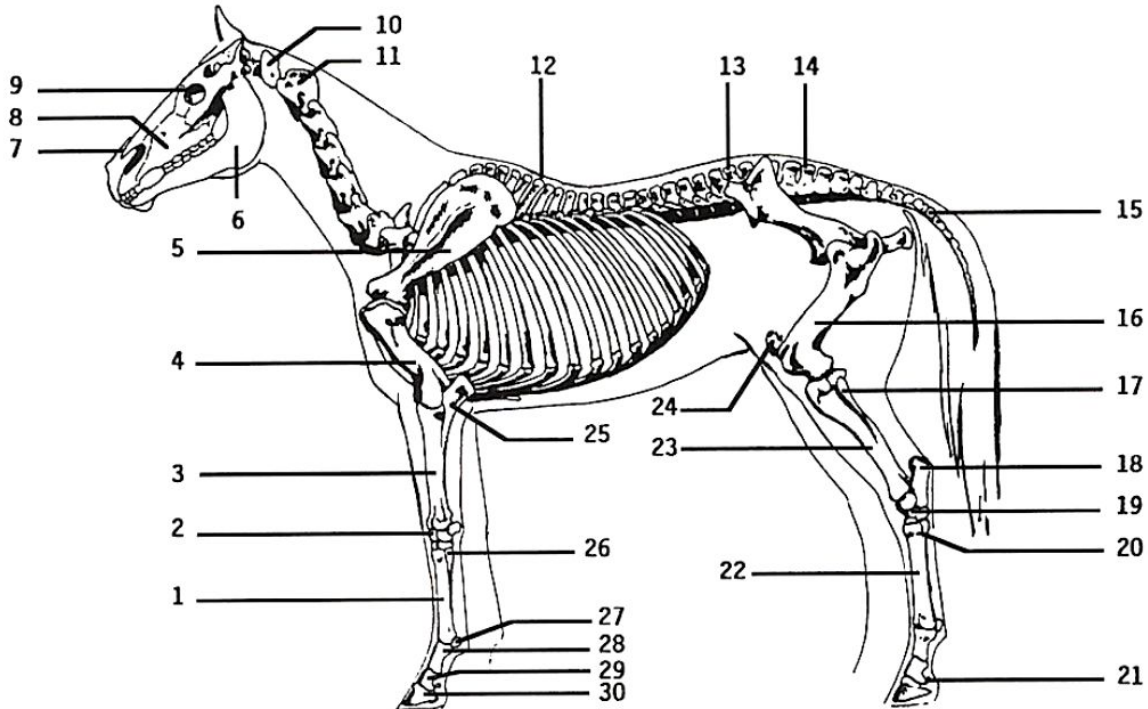


Skeletal System of the Horse Study Guide



1. Metacarpal (cannon) - Pertaining to the cannon; the area between the knee and fetlock joint of the foreleg
2. Carpus - Another name for the knee (front legs)
3. Radius - The large, principal bone of the forearm; located between the elbow joint and the knee
4. Humerus - The bone that extends from the shoulder to the elbow
5. Scapula - The shoulder blade
6. Mandible - The hinged lower jaw
7. Nasal Bone - Bone that covers the nasal cavity
8. Maxillary Bone - A large bone that contains the roots of the molars, the upper portion of the jaw



Skeletal System of the Horse Study Guide

9. Orbit - Eye socket
10. Atlas - The first vertebra of the cervical region
11. Axis - The second cervical vertebra
12. Thoracic Vertebrae - Part of the spinal column that has ribs attached; forms the chest
13. Lumbar Vertebrae - Pertaining to the loins; the part of the back between the thorax and pelvis
14. Sacral Vertebrae - Lowest part of the spinal column that extends into the rump area
15. Coccygeal Vertebrae - Also called caudal vertebra; the bones in the tail; the number of bones ranges from fifteen to twenty-one, depending on the horse and the breed
16. Femur - The thigh bone; the largest bone in the horse's body
17. Fibula - A small bone fused to the tibia
18. Fibula Tarsal - Bone at the point of the hock
19. Tarsus - The region of articulation between the gaskin and lower hind leg; the hock
20. Small Metatarsal - Small bones at the top of the metacarpal (cannon bone) of the hind leg
21. Distal Sesamoid - Also known as the navicular bone; located in the hoof capsule between the second and third phalanx
22. Metatarsus - Pertaining to the cannon; the area between the hock and the fetlock joint in the hind leg
23. Tibia - The larger of the two bones of the gaskin, between the stifle and the hock
24. Patella - A small triangular one situated at the front of the stifle; also called the kneecap
25. Ulna - A bone that, fused together with the radius, forms the forearm of the horse



Skeletal System of the Horse Study Guide

26. Metacarpal - Pertaining to the cannon; the area between the knee and fetlock joint of the foreleg

27. Sesamoid - Small bones at the rear of the fetlock joint; absorb pressure from the tendons
28. 1st Phalanx - First of the three bones below the fetlock; also called the long pastern

29. 2nd Phalanx - Second of the three bones below the fetlock; also called the short pastern

30. 3rd Phalanx - Third of the three bones below the fetlock; also called the coffin bone